



Quick Filter

Administrator Guide

Copyright

Copyright © 2020 Vitextra. All rights reserved.

All trademarks and registered trademarks mentioned in this document are property of their respective owners.

Company information:

Email: info@vitextra.com

Website: vitextra.com

Contents

1. Introduction.....	3
2. Product description	4
2.1 Single filtering field	4
2.2 Populate filter with URL parameter.....	4
3. Installation.....	5
3.1 Installer	5
3.2 SharePoint services.....	5
3.3 Required permissions	6
3.1 Vitextra product installer	7
1. Product activation	11
5. Quick Filter setup	13
5.1 Site collection features activation	13
5.1 Adding the web part to a page	14
5.1 List Filter connection to a list/library.....	15
5.1 Selecting fields for filtering.....	17
6. Uninstalling.....	19
7. Frequently asked questions	20

1. Introduction

The web part of the Vitextra Quick Filter makes it possible to filter data in lists and libraries of SharePoint documents with a single filter field.

The web part of the Vitextra Quick Filter is based on the Microsoft SharePoint platform and is compatible with SharePoint Foundation 2010/2013 and SharePoint Server 2010/2013/2016/2019.

This document contains all the necessary information for Vitextra Quick Filter installation, activation, and setup:

- Product description
- Product installation
- Component activation
- Frequently asked questions

2. Product description

Vitextra Quick Filter makes it possible to filter data within SharePoint Lists and Document Libraries with a single field.

2.1 Single filtering field

Quick Filter is a single field for filtering data by selected columns. This saves page space and makes the filtering process more efficient.

2.2 Populate filter with URL parameter

Quick Filter allows you to initiate a filter field with the value specified in the URL parameter.

3. Installation

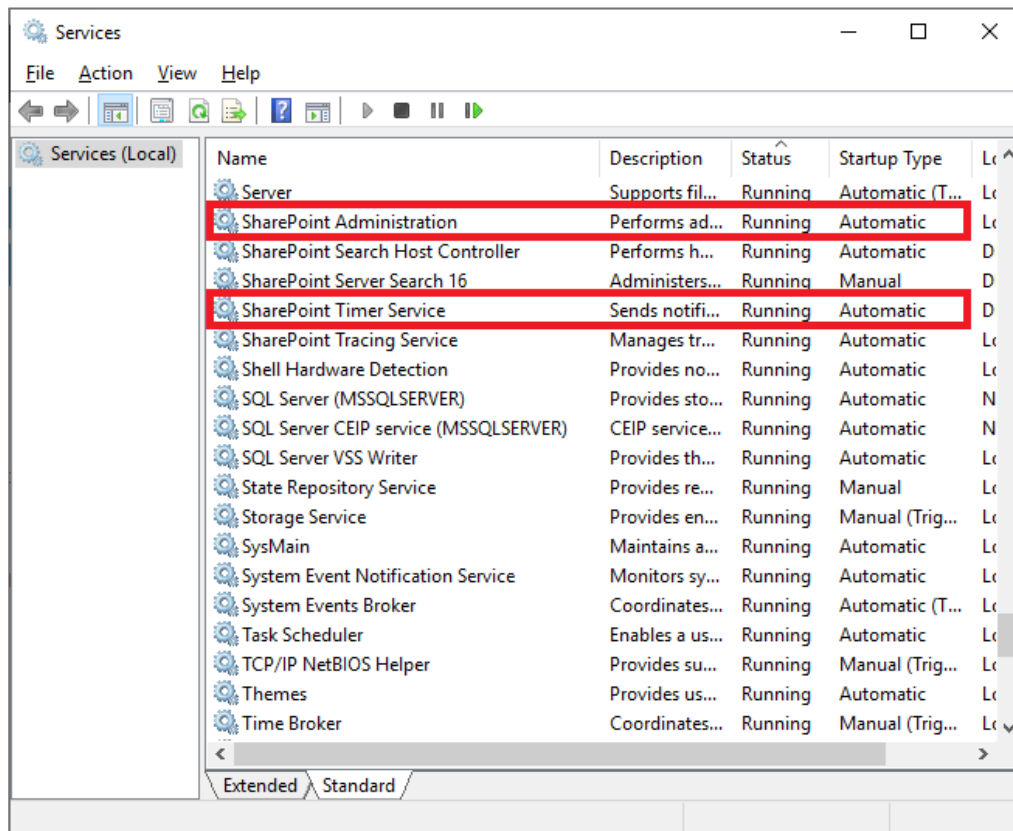
3.1 Installer

On the product download page (<https://vitextra.com/en/downloads>), download the respective installer and save it to one of the web servers of your SharePoint farm.¹

3.2 SharePoint services

Before installation, make sure that the following Windows services are started and running on the SharePoint web server where you want to install the Quick Filter:

- SharePoint Administration
- SharePoint Timer Service



¹ Vitextra installers are compatible with the following SharePoint versions: 2013, 2016, 2019.

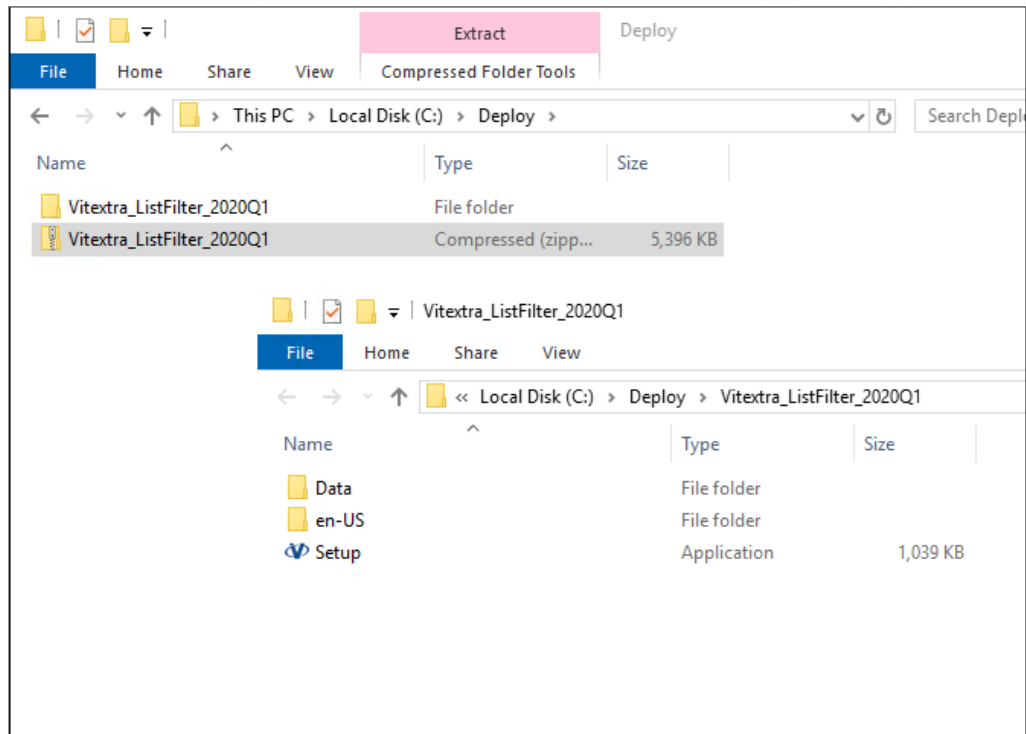
3.3 Required permissions

To install the Quick Filter, you need the following rights and permissions:

- Membership in the local administrator group
- Membership in the SharePoint farm administrator group

3.1 Vitextra product installer

Unpack the installer and run Setup.exe²



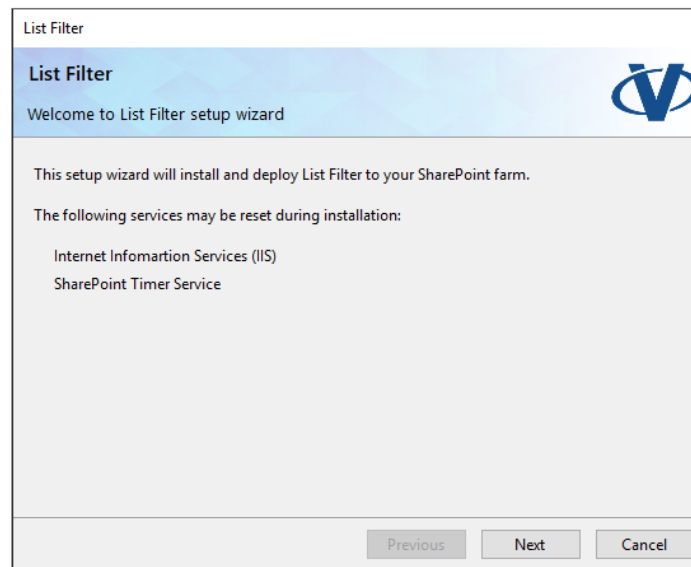
Note

If you have failed to run Setup.exe, right-click on it and select **Run as Administrator** in the context menu.

Once the installer has been started, the greeting screen appears.

²

The Vitextra product installer is not localized and supports English only.

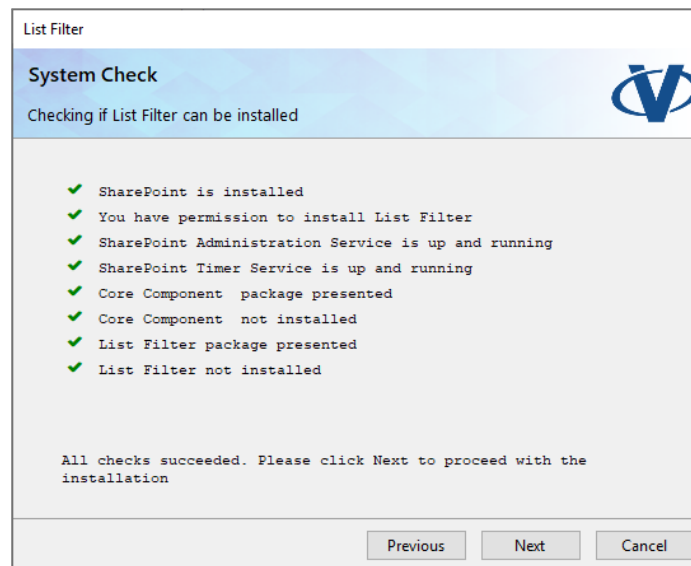


Click **Next** to start the system and installer check process.

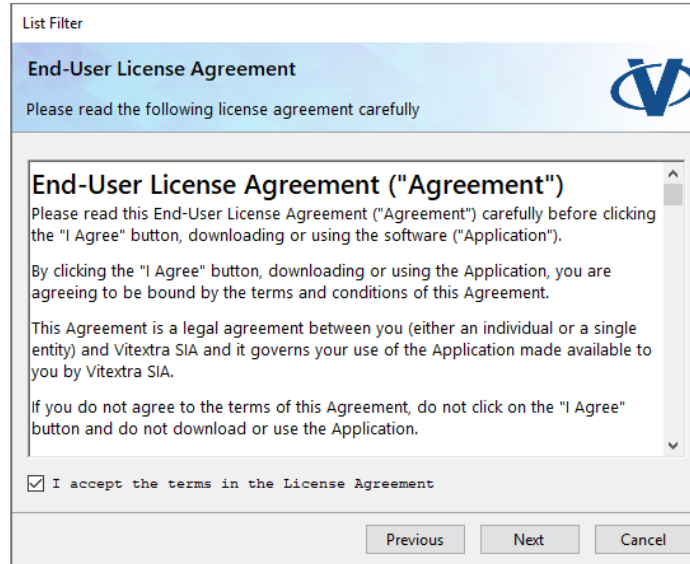
Note

Most often, you can just click **Next** when installing Vitextra products to accept default settings.

Once the system is checked, click **Next**.



Read carefully and accept the terms of the end-user license agreement. Then, click **Next**.



List Filter

End-User License Agreement

Please read the following license agreement carefully

End-User License Agreement ("Agreement")
Please read this End-User License Agreement ("Agreement") carefully before clicking the "I Agree" button, downloading or using the software ("Application").

By clicking the "I Agree" button, downloading or using the Application, you are agreeing to be bound by the terms and conditions of this Agreement.

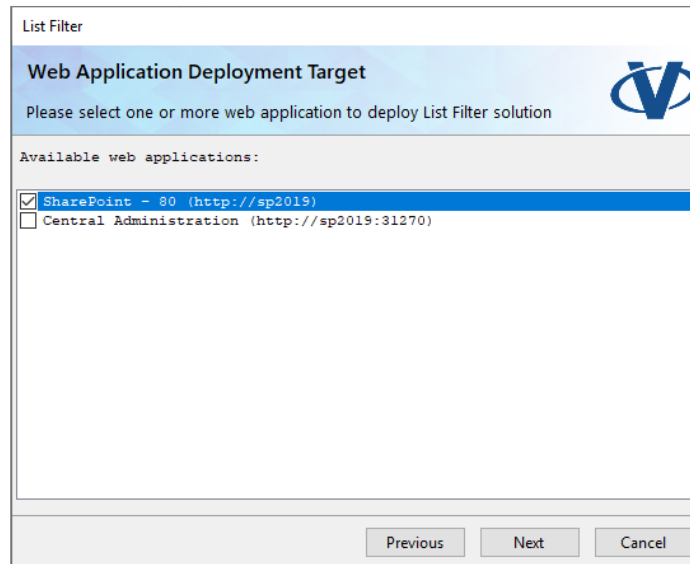
This Agreement is a legal agreement between you (either an individual or a single entity) and Vitextra SIA and it governs your use of the Application made available to you by Vitextra SIA.

If you do not agree to the terms of this Agreement, do not click on the "I Agree" button and do not download or use the Application.

I accept the terms in the License Agreement

Previous Next Cancel

Select the SharePoint web applications where you want to install the Quick Filter and click Next to start the installation.



List Filter

Web Application Deployment Target

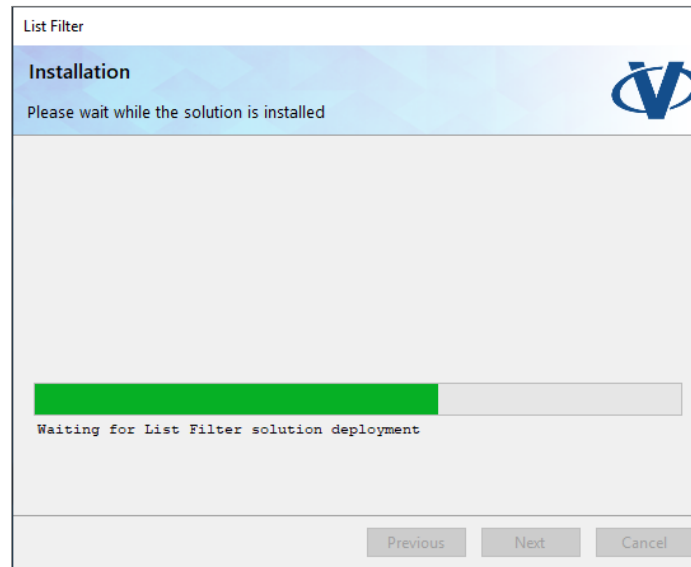
Please select one or more web application to deploy List Filter solution

Available web applications:

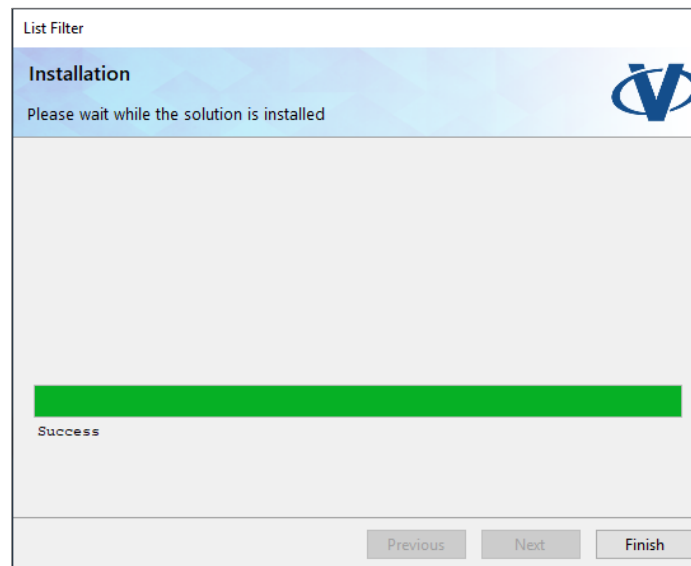
- SharePoint - 80 (http://sp2019)
- Central Administration (http://sp2019:31270)

Previous Next Cancel

Wait until the installation is complete.



Once the installation has been completed, click Finish to close the product installer.



Quick Filter

Статус	Пробная версия
Ключ продукта Введите 25-значный ключ продукта	Ключ: <input type="text" value="9HJGH-GL7LT-27XHS-6EME0-68QTD"/>
Офлайн активация	<input type="checkbox"/> Активировать офлайн

If activation has been successful, the product status will be automatically changed to **Activated**.

Quick Filter

Статус	Активирован Продукт активирован. Дополнительные действий не требуется
--------	--

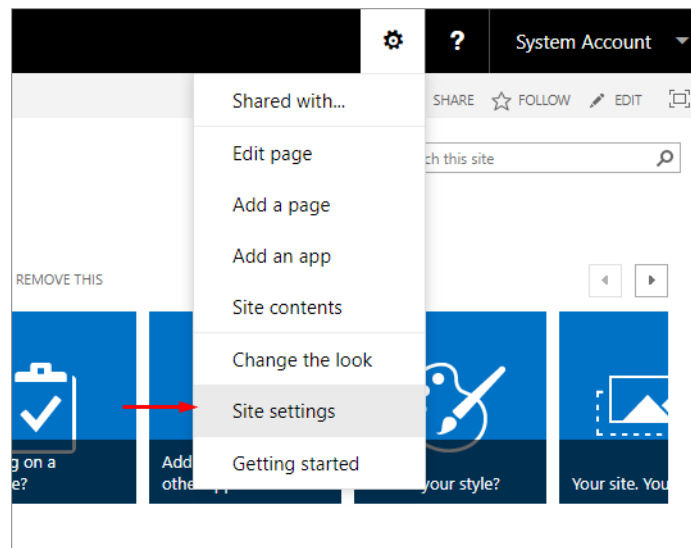
5. Quick Filter setup

5.1 Site collection features activation

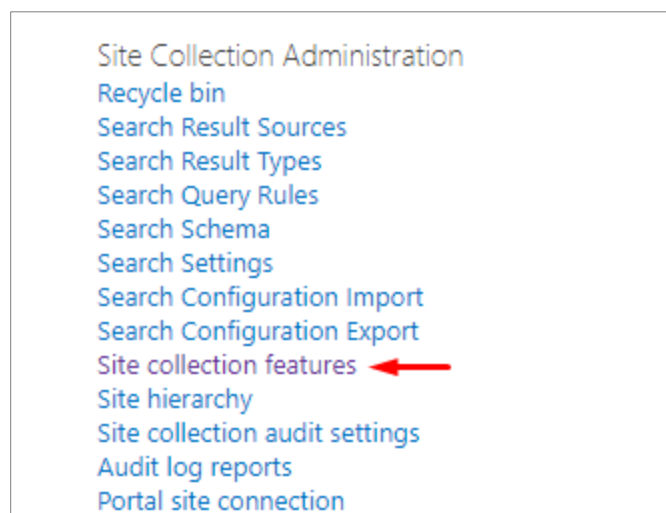
Before using the Quick Filter, you need to activate the following site collection features.

Open the SharePoint website where you want to use the Quick Filter.

Go to site settings (**Settings – Site Settings**):



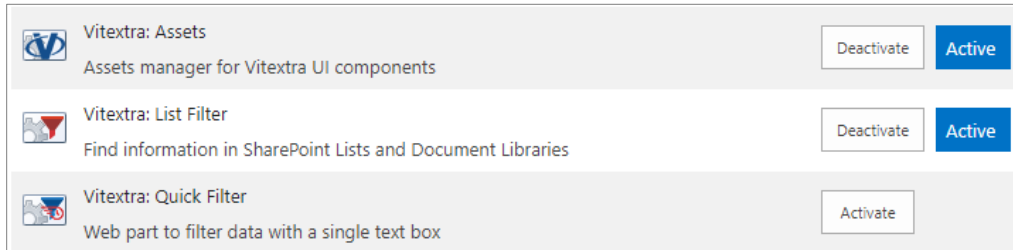
On the Site Settings page, click on the **Site Collection Features** link in the **Site Collection Administration** section:



All Vitextra visual components use shared resources contained in the following feature: **Vitextra: Assets**. If this site collection feature is not activated, click **Activate**:



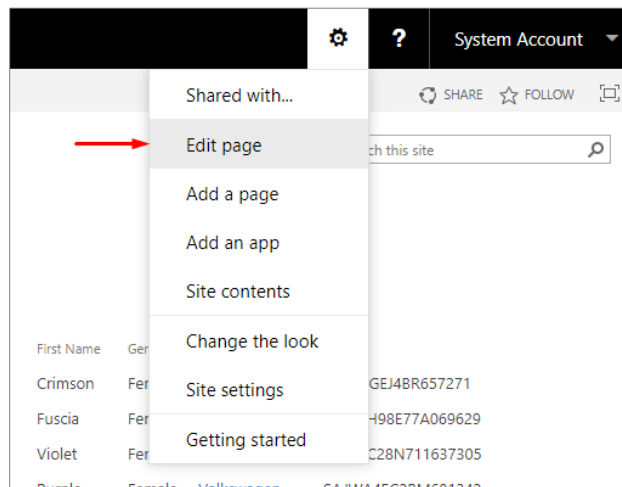
To activate the Quick Filter, click **Activate** next to **Vitextra: Quick Filter**:



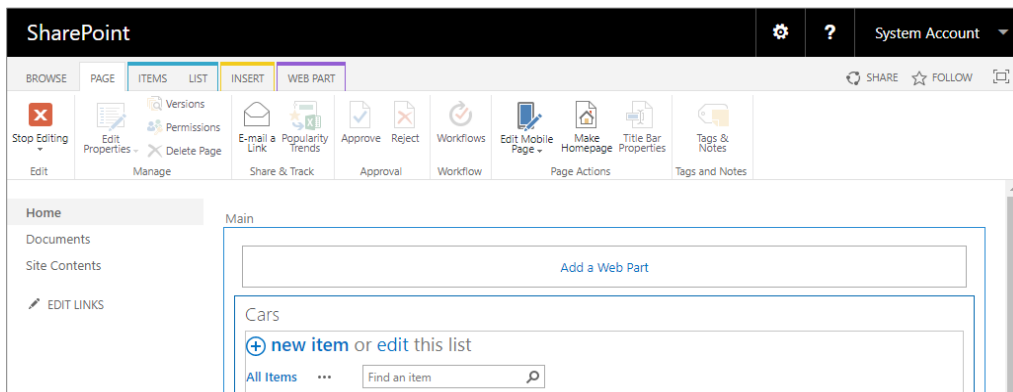
5.1 Adding the web part to a page

Go to the page where you want to add the Quick Filter web part to. You can use any website page, including a page of the list or library document representation.

Enter the edit page mode **Settings – Edit Page**:



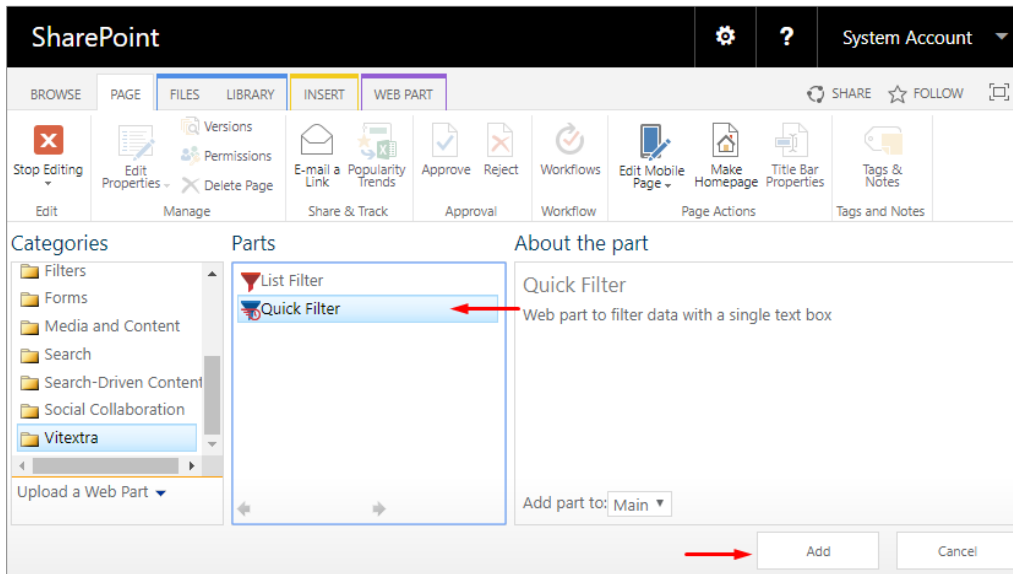
Click **Add Web Part** to open the web part selection dialog:



Note

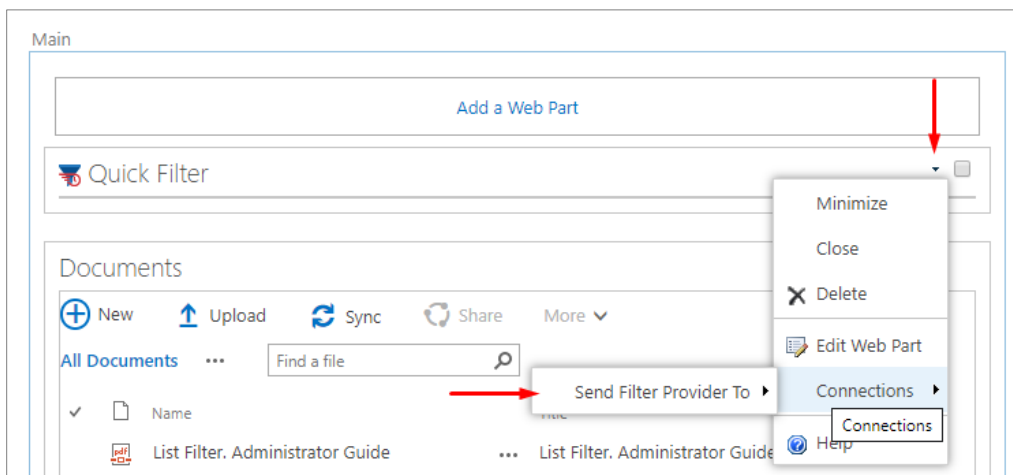
If you are adding the Quick Filter web part to a wiki page, open the web part selection dialog by positioning the cursor at the location where you want the web part to be added to, and click **Insert – Web Part** on the ribbon.

On the web part addition panel, select the **Vitextra** category, select **Quick Filter** in the list of web parts, and click **Add**:

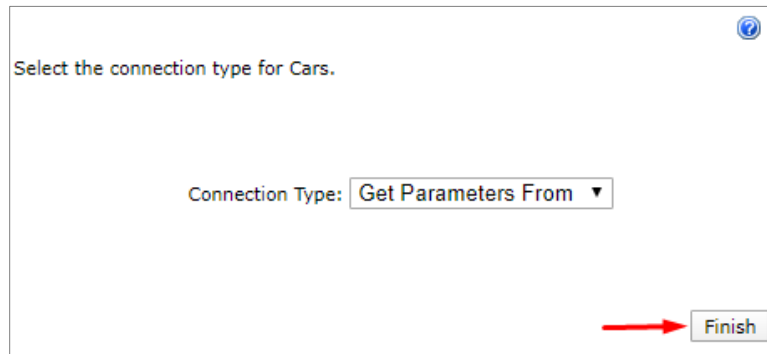


5.1 Quick Filter connection to a list/library

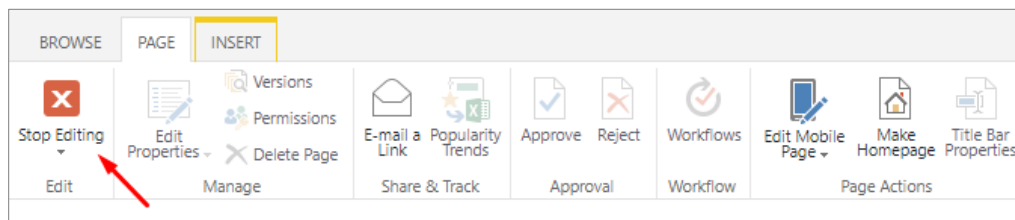
To use the Quick Filter, you need to connect it to a web part of the document list or library representation. For this purpose, select **Connections – Send Filter Provider to** in the context menu and select the web part name which data should be filtered:




Click **Finish** in the popup box:



Exit the page edit mode by clicking **Stop Editing** in the toolbar.

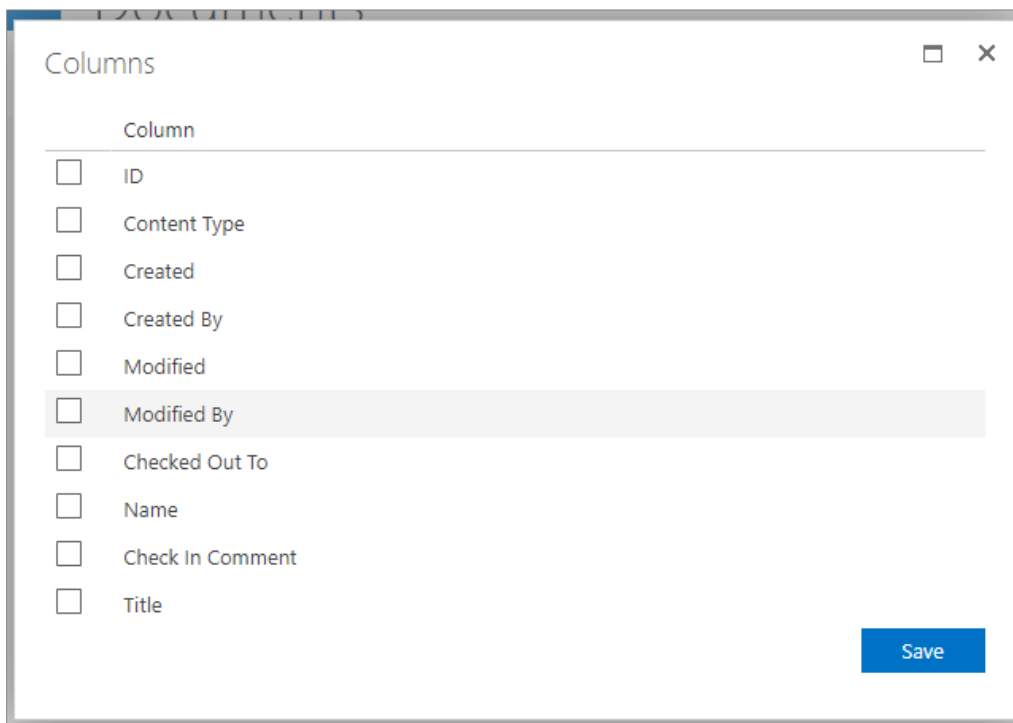


5.1 Selecting fields for filtering

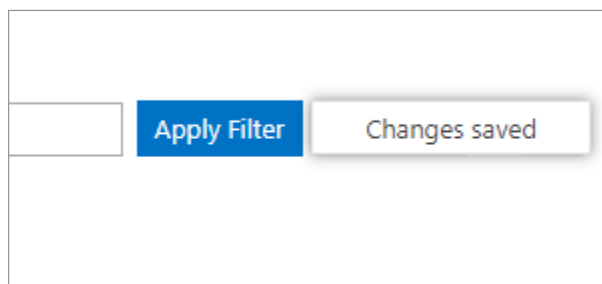
Open the field selection dialog by clicking  :



In the field selection dialog specify the fields that should be used for filtering.



Click **Save** to close the column setup dialog.



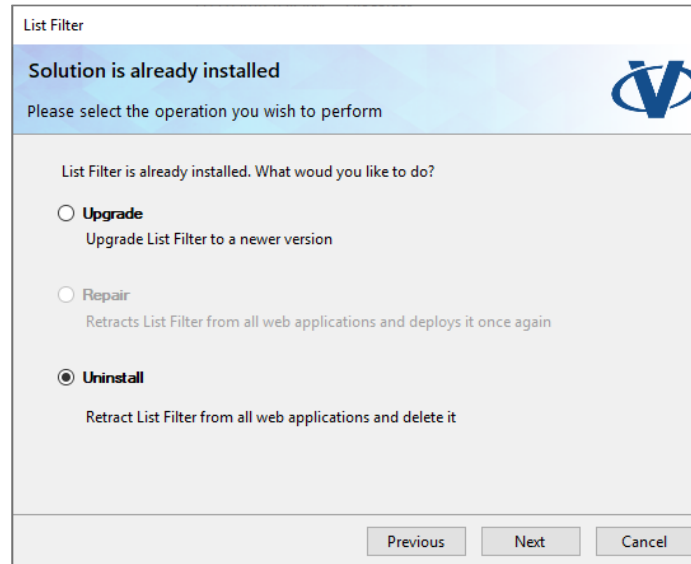
After saving, refresh the page to view the changes.

Note:

If no columns are selected, then filtering will be carried out by the ID field.

6. Uninstalling

To uninstall the Quick Filter, run the Vitextra product installer and select **Uninstall**:



Click **Next** and wait until the deinstallation process is completed.

7. Frequently asked questions

Do you offer a trial period for the Quick Filter?

Yes. We offer free trial period of 14 days for each Vitextra product without any functionality limitations.

Which browsers does the Quick Filter support?

Vitextra products support the following browsers:

- Microsoft Edge
- Google Chrome
- Firefox
- Safari

Do I have to reinstall the Quick Filter to activate it?

No. Activation does not require reinstalling the product.

Do I have to reinstall the product when adding/removing servers from the SharePoint farm?

No. Each Vitextra product is activated on the farm level. It does not matter how many servers or users your farm has.

Do I have to activate the Quick Filter when migrating to new SharePoint versions?

You will have to activate the Quick Filter when changing the SharePoint farm identifier.